

Product data sheet



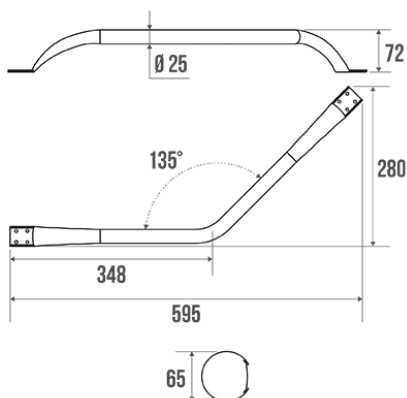
Information

Designation	135° angled one-piece grab bar, 330 x 330 mm, Bright polished Stainless steel, tube Ø 25 mm
Reference	049790

Product advantages

- + Invisible fasteners.

Description



Symmetrical.
Brushed stainless steel tube Ø 25 mm.
One-piece bar.
Concealed fixings.
Bright chrome-plated resin cover plates Ø 65 mm.

Technical characteristics

Finish	Bright polished
Dimensions	330 x 330 mm
Diameter Ø	25 mm
Material	Stainless steel
Gross weight	0.480 kg
Packaging	Plastic protection bag + Hanger for display
Maximum Weight Capacity	150 kg
Laboratory tests	225 kg
Made in France	yes
Maintenance	yes
Guarantee	5 years
Gencod	3563390497906
Custom code	7324900010
Technical sheet	A74983002_IND_07

Spécificité

Incompatible dans les milieux chlorés.

Fixing and maintenance advices

Recommended height for the horizontal part : 800 mm from the ground. Grab bars provide support and added safety if properly fitted in accordance with our technical instructions. Careful consideration and selection of the appropriate wall fixings according to the wall-mounted support is required to ensure the long life of your accessory. The use of stainless steel screws (Ø 4 mm) is highly recommended to prevent corrosion in damp environment. Before drilling, physically hold the product against the wall at desired position and mark the hole locations. All the fixing points must be respected. After installation and before use, make sure that all fixing screws are tightened securely. DO NOT use the grab bar as a step. DO NOT sit on or hang from the grab bar.

Fiche produit mise à jour le : 10/01/2024