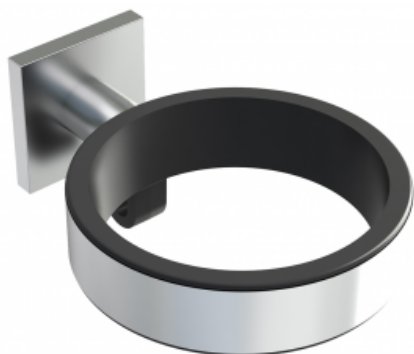


Product data sheet



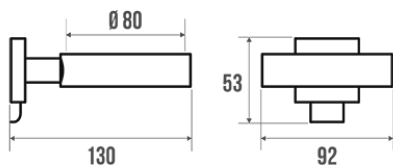
Information

Designation	Chrome-plated wall bracket for hair dryers
Reference	872113

Product advantages

- + Ideal complement of the hair dryer ref. 872112

Description



Sensory switch.
6 drying configurations. 3 temperature levels including 1 cold.
Power supply : 230 V - 50-60 Hz.
Output : 70 and 95 m3/h.
Classification: IP21.
Electrical insulation : "Class II".
Setting in volume area 3.
Sound level: 70/77 dBA.
Universal shaver socket with dual voltage 115/230 V.

Technical characteristics

Finish	Chrome-plated
Dimensions	92 x 130 x 55 mm
Diameter Ø	95 mm
Material	Zinc alloy and plastic
Gross weight	0.900 kg
Packaging	Printed cardboard box
Maintenance	yes
Guarantee	2 years
Gencod	3563398721133
Custom code	3925901000
Technical sheet	No technical sheet available

Fixing and maintenance advices

Careful consideration and selection of the appropriate wall fixings according to the wall-mounted support is required to ensure the long life of your accessory. The use of stainless steel screws (\varnothing 4 mm) is highly recommended to prevent corrosion in damp environment. Before drilling, physically hold the product against the wall at desired position and mark the hole locations. All the fixing points must be respected. After installation and before use, make sure that all fixing screws are tightened securely.

Fiche produit mise à jour le : 10/01/2024