

Product data sheet



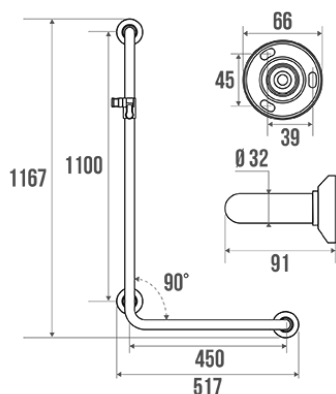
Information

Designation	L-shaped shower bar - Left, Chrome and nickel-plated Brass, tube Ø 32 mm
Reference	381539

Product advantages

- + Help to get up and stand.
- + With slider bracket shower handset.
- + Concealed fixings.
- + Corrosion resistant warranty.

Description



Chrome and nickel-plated brass tube Ø 32 mm. Bright chrome-plated resin flanges and cover plates.
90° left angled. With intermediate straight support.

Screws included.

Technical characteristics

Finish	Chrome and nickel-plated
Dimensions	450 x 1000 mm
Diameter Ø	32 mm
Material	Brass
Gross weight	1.800 kg
Packaging	Printed plastic protection bag
CE Marking : safe load	150 kg
Laboratory tests	225 kg
Made in France	yes

Maintenance	yes
Guarantee	10 years
Gencod	3563393815394
Custom code	7418200090
Technical sheet	A38153201_IND_05
Spare parts	Ref. 381930 : Flange + Cover-plates. Ref. 049319 : Sliding bracket for shower handset.

Fixing and maintenance advices

Recommended height for the horizontal part : 800 mm from the ground. Grab bars provide support and added safety if properly fitted in accordance with our technical instructions. Careful consideration and selection of the appropriate wall fixings according to the wall-mounted support is required to ensure the long life of your accessory. The use of stainless steel screws (Ø 4 mm) is highly recommended to prevent corrosion in damp environment. Before drilling, physically hold the product against the wall at desired position and mark the hole locations. All the fixing points must be respected. After installation and before use, make sure that all fixing screws are tightened securely. DO NOT use the grab bar as a step. DO NOT sit on or hang from the grab bar.

Fiche produit mise à jour le : 10/01/2024